



A proud partner of the [AmericanJobCenter](#)® network

## PRESS RELEASE

**FOR IMMEDIATE RELEASE**

**DATE:** October 18, 2019

**MEDIA CONTACT:** BRIAN HERNANDEZ

**PHONE:** 512-244-7966

### **Rural Capital Area Adds 3,925 Jobs in September, Unemployment Rate Drops to 2.8%**

CEDAR PARK, Texas – The economy of the Rural Capital Area of Central Texas saw positive employment growth in September 2019, with 3,925 jobs added, according to figures released today by the [Texas Workforce Commission](#) (TWC). The unadjusted unemployment rate in the nine-county workforce development area dropped from 2.9 percent in August, down to 2.8 percent in September. The 2.8 percent unemployment rate represented 15,141 residents seeking employment. The region's unemployment rate remained below the Texas and national rates, which both came in at 3.3 percent\*.

The Rural Capital Area's 1.75 percent annual growth rate represents the addition of 9,118 jobs since September 2018.

Within the Rural Capital Area counties, Blanco recorded the lowest unemployment rate at 2.3 percent in September. Fayette County's unemployment rate was at 2.5 percent, Burnet and Lee counties were at 2.7 percent, Hays and Williamson were at 2.8 percent, Bastrop was at 2.9 percent, Llano was at 3.2, and Caldwell County came in at 3.3 percent.

"We continue to see record low unemployment across our region, which helps us work with employers to hire workers of all abilities, ages and backgrounds, who have not historically been at the forefront of recruiting," said Workforce Solutions Rural Capital Area CEO Paul Fletcher. "We're proud to empower our local businesses to build a strong workforce pipeline to grow their operations, and to up skill our talented workforce to meet the high-demand for these targeted careers."

Employment estimates released by TWC are produced in cooperation with the U.S. Department of Labor's Bureau of Labor Statistics. All estimates are subject to revision. To access this and more employment data, visit [texaslmi.com](http://texaslmi.com).

###BH

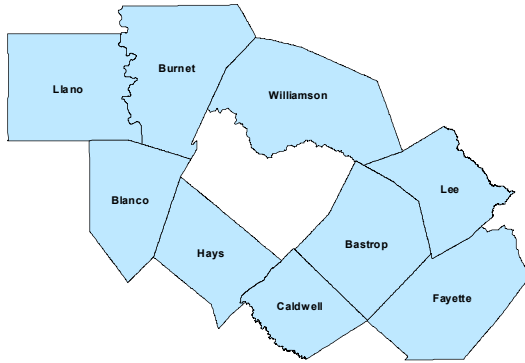
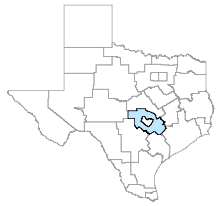
*Workforce Solutions Rural Capital Area is a nonprofit community partnership providing no cost recruitment, employment services and child care assistance, to businesses and job seekers in the Rural Capital Area of central Texas. This nine-county region includes Bastrop; Blanco; Burnet; Caldwell; Fayette; Hays; Lee; Llano; and Williamson counties. For more details on WSRCA, and the services it offers, visit [www.workforcesolutionsrca.com](http://www.workforcesolutionsrca.com).*

*\*All unemployment rates listed are not seasonally adjusted.*

*The Texas Workforce Commission in partnership with 28 local workforce development boards forms Texas Workforce Solutions*  
Workforce Solutions Rural Capital Area is an Equal Opportunity Employer/Program  
Auxiliary Aids and Services are available upon request to individuals with disabilities  
Relay TX: 711 or 1-800-735-2988 (Voice) or 1-800-735-2989 (TDD)

## Rural Capital Workforce Development Area

September 2019



### WDA Labor Force Statistics

	Sep-19	Aug-19	Sep-18	Yearly Change
Civilian Labor Force	544,575	541,472	536,428	8,147
Employed	529,434	525,509	520,316	9,118
Unemployed	15,141	15,963	16,112	-971
Unemployment Rate	2.8%	2.9%	3.0%	-0.2%

### Texas Labor Force Statistics

	Sep-19	Aug-19	Sep-18	Yearly Change
Civilian Labor Force	14,112,718	14,015,597	13,849,870	262,848
Employed	13,641,101	13,508,829	13,337,031	304,070
Unemployed	471,617	506,768	512,839	-41,222
Unemployment Rate	3.3%	3.6%	3.7%	-0.4%

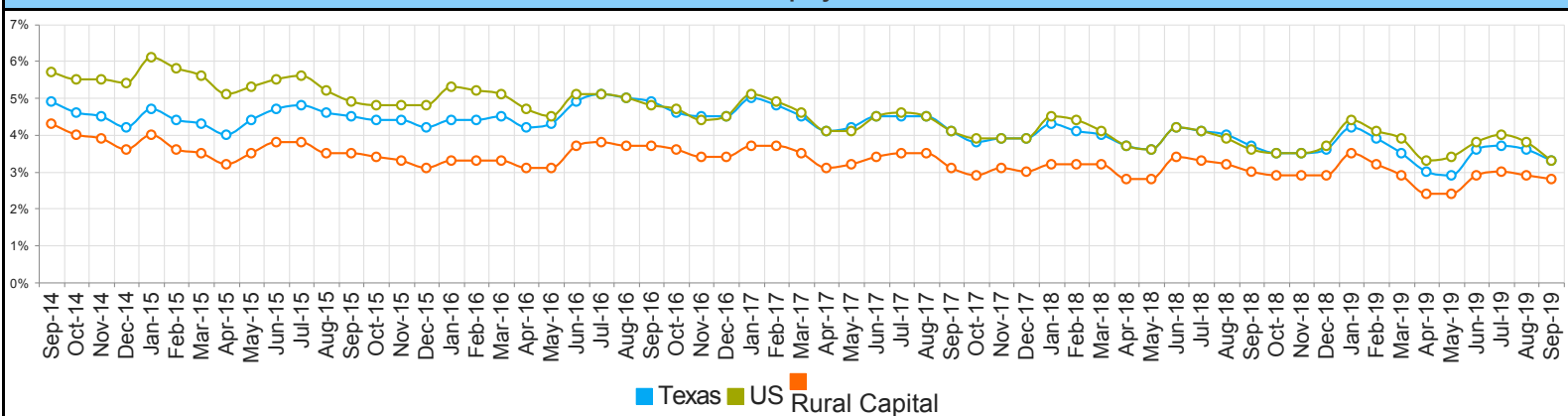
### US Labor Force Statistics

	Sep-19	Aug-19	Sep-18	Yearly Change
Civilian Labor Force	163,943,000	164,019,000	161,958,000	1,985,000
Employed	158,478,000	157,816,000	156,191,000	2,287,000
Unemployed	5,465,000	6,203,000	5,766,000	-301,000
Unemployment Rate	3.3%	3.8%	3.6%	-0.3%

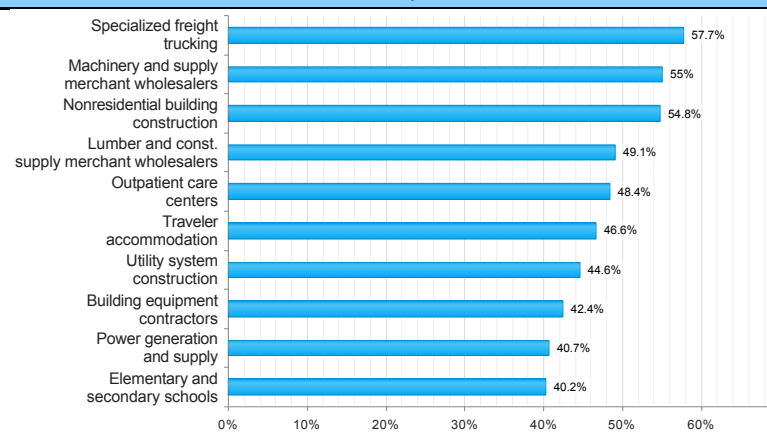
### Continued Claims for the Week of the 12th

	Sep-19	Aug-19	Sep-18	Yearly Change
WDA	2,558	2,512	2,464	94
Texas	89,379	94,973	85,927	3,452

## Historical Unemployment Rates



## Projected Top Ten Fastest Growing Industries in WDA (% Growth 2016-2026)



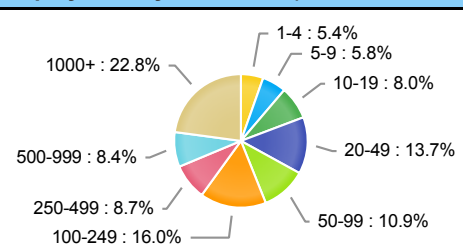
### Average Weekly Wage (1st Quarter 2019)

	Q1 2019	Q4 2018	Q1 2018	Quarterly Change	Yearly Change
WDA	\$1,048	\$969	\$994	\$79	\$54
Texas	\$1,204	\$1,148	\$1,168	\$56	\$36
US	\$1,184	\$1,144	\$1,152	\$40	\$32

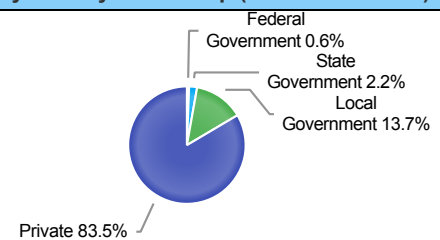
## Employment by Industry (1st Quarter 2019, Percent Change)

Industry	Employment	% of Total	% Quarterly Change	% Yearly Change
Natural Resources and Mining	4,401	1.4%	0.6%	9.5%
Construction	27,278	8.6%	0.8%	5.7%
Manufacturing	23,499	7.4%	2.5%	8.5%
Trade, Transportation and Utilities	74,796	23.6%	-2.0%	2.2%
Information	4,019	1.3%	10.3%	6.8%
Financial Activities	13,731	4.3%	-0.1%	3.6%
Professional and Business Services	31,098	9.8%	2.9%	10.8%
Education and Health Services	74,880	23.7%	-0.1%	2.2%
Leisure and Hospitality	42,170	13.3%	-0.6%	3.9%
Other Services	10,256	3.2%	2.8%	6.6%
Public Administration	10,433	3.3%	0.7%	2.7%

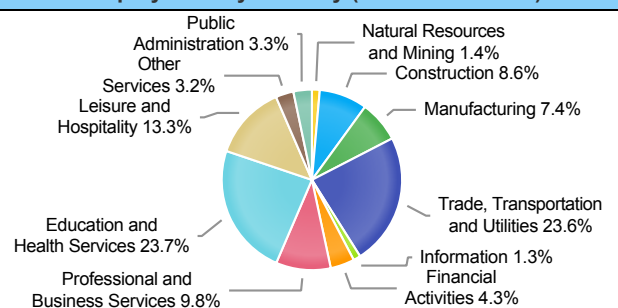
## Employment by Size Class (1st Quarter 2019)



## Employment by Ownership (1st Quarter 2019)



## Employment by Industry (1st Quarter 2019)



RURAL CAPITAL																					
September-19						August-19				September-18				Change from Last Month (Sept 19 vs. August 19)				Change from Last Year (Sept 19 vs. Sept 18)			
Area	Area Type	Labor Force	Employment	Unemployment	Rate	Labor Force	Employment	Unemployment	Rate	Labor Force	Employment	Unemployment	Rate	Labor Force	Employment	Unemployment	Rate	Labor Force	Employment	Unemployment	Rate
Texas	State	14,112,718	13,641,101	471,617	3.3	14,015,597	13,508,829	506,768	3.6	13,849,870	13,337,031	512,839	3.7	97121	132272	-35151	-0.30	262848	304070	-41222	-0.40
Austin-Round Rock	MSA	1,217,793	1,185,886	31,907	2.6	1,209,485	1,175,776	33,709	2.8	1,200,200	1,165,553	34,647	2.9	8308	10110	-1802	-0.20	17593	20333	-2740	-0.30
Rural Capital	WDA	544,575	529,434	15,141	2.8	541,472	525,509	15,963	2.9	536,428	520,316	16,112	3.0	3103	3925	-822	-0.10	8147	9118	-971	-0.20
Bastrop	County	42,140	40,908	1,232	2.9	41,945	40,651	1,294	3.1	41,548	40,222	1,326	3.2	195	257	-62	-0.20	592	686	-94	-0.30
Blanco	County	6,386	6,237	149	2.3	6,397	6,236	161	2.5	6,223	6,066	157	2.5	-11	1	-12	-0.20	163	171	-8	-0.20
Burnet	County	23,482	22,859	623	2.7	23,491	22,821	670	2.9	22,877	22,221	656	2.9	-9	38	-47	-0.20	605	638	-33	-0.20
Caldwell	County	19,411	18,777	634	3.3	19,308	18,649	659	3.4	19,137	18,461	676	3.5	103	128	-25	-0.10	274	316	-42	-0.20
Fayette	County	12,649	12,338	311	2.5	12,665	12,320	345	2.7	12,633	12,292	341	2.7	-16	18	-34	-0.20	16	46	-30	-0.20
Hays	County	116,498	113,294	3,204	2.8	115,735	112,354	3,381	2.9	114,688	111,358	3,330	2.9	763	940	-177	-0.10	1810	1936	-126	-0.10
Lee	County	9,487	9,234	253	2.7	9,527	9,254	273	2.9	9,462	9,195	267	2.8	-40	-20	-20	-0.20	25	39	-14	-0.10
Llano	County	8,690	8,408	282	3.2	8,820	8,506	314	3.6	8,534	8,222	312	3.7	-130	-98	-32	-0.40	156	186	-30	-0.50
Williamson	County	305,832	297,379	8,453	2.8	303,584	294,718	8,866	2.9	301,326	292,279	9,047	3.0	2248	2661	-413	-0.10	4506	5100	-594	-0.20
Cedar Park	City	42,493	41,354	1,139	2.7	42,153	40,986	1,167	2.8	41,883	40,645	1,238	3.0	340	368	-28	-0.10	610	709	-99	-0.30
Georgetown	City	30,439	29,412	1,027	3.4	30,233	29,149	1,084	3.6	29,988	28,907	1,081	3.6	206	263	-57	-0.20	451	505	-54	-0.20
Hutto	City	14,451	14,052	399	2.8	14,311	13,926	385	2.7	14,214	13,811	403	2.8	140	126	14	0.10	237	241	-4	0.00
Kyle	City	23,854	23,186	668	2.8	23,666	22,993	673	2.8	23,457	22,790	667	2.8	188	193	-5	0.00	397	396	1	0.00
Leander	City	26,700	25,913	787	2.9	26,504	25,681	823	3.1	26,233	25,468	765	2.9	196	232	-36	-0.20	467	445	22	0.00
Round Rock	City	69,806	67,961	1,845	2.6	69,289	67,353	1,936	2.8	68,814	66,796	2,018	2.9	517	608	-91	-0.20	992	1165	-173	-0.30
San Marcos	City	33,702	32,690	1,012	3.0	33,518	32,418	1,100	3.3	33,181	32,131	1,050	3.2	184	272	-88	-0.30	521	559	-38	-0.20