



A proud partner of the [AmericanJobCenter](#)® network

## PRESS RELEASE

**FOR IMMEDIATE RELEASE**

**DATE:** November 15, 2019

**MEDIA CONTACT:** BRIAN HERNANDEZ

**PHONE:** 512-244-7966 EXT. 5020

### **Rural Capital Area Jobless Rate Drops for Third Straight Month**

CEDAR PARK, Texas – The unemployment rate in the Rural Capital Area of Central Texas fell for the third consecutive month, dropping from 2.8 percent\* in September, down to 2.7 percent in October, with 4,576 jobs added, according to figures released today by the [Texas Workforce Commission](#) (TWC). The 2.7 percent unemployment rate represented 14,928 residents in the nine-county area seeking employment. The region's unemployment rate remained below the Texas and national rates, which both were unchanged from September at 3.3 percent.

The Rural Capital Area's 2.48 percent annual growth rate represents the addition of 12,927 jobs since October 2018.

Within the [Workforce Solutions Rural Capital Area](#) (WSRCA) counties, Blanco recorded the lowest unemployment rate at 2.3 percent in October. Fayette County's unemployment rate dropped to 2.4 percent, Burnet and Lee counties were at 2.6 percent, Hays and Williamson were at 2.7 percent, Bastrop was at 2.9 percent, and Caldwell and Llano were at 3.1 percent.

"The improving unemployment rate means our region's economy is strong, but it also signals a tightening labor market," said WSRCA Chief Executive Officer Paul Fletcher. "We are working closely with our community, industry and training partners, to upskill new and incumbent workers to meet the workforce needs of all of our industries, as well as connecting employers to underutilized populations of talented individuals, who are ready to pivot into occupations in high-demand."

Key Points by Industry for the Rural Capital Area, according to the most recent labor market data:

- The Information Services Industry has experienced the greatest quarterly employment growth with an increase of 7 percent.
- Job gains were also experienced in the Construction Industry (5.1 percent), and the Leisure and Hospitality Industry (4.7 percent), as well as the Natural Resources and Mining Industry (4.5 percent).
- The Information Services Industry in the Rural Capital Area also experienced the greatest positive annual job growth with an increase of 15 percent.
- Significant positive annual job growth was also experienced in the Natural Resources and Mining Industry (10.6 percent), the Professional and Business Services Industry (9.6 percent), and the Construction Industry (8 percent).

Employment estimates released by TWC are produced in cooperation with the U.S. Department of Labor's Bureau of Labor Statistics. All estimates are subject to revision. To access this and more employment data, visit [texaslmi.com](http://texaslmi.com).

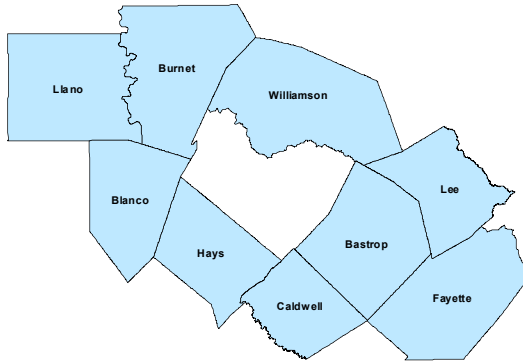
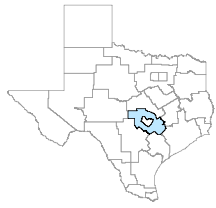
*Workforce Solutions Rural Capital Area is a nonprofit community partnership providing no cost recruitment, employment services and childcare assistance, to businesses and job seekers in the Rural Capital Area of central Texas. This nine-county region includes Bastrop; Blanco; Burnet; Caldwell; Fayette; Hays; Lee; Llano; and Williamson counties. For more details on WSRCA, and the services it offers, visit [www.workforcesolutionsrca.com](http://www.workforcesolutionsrca.com).*

*\*All unemployment rates listed are not seasonally adjusted.*

*The Texas Workforce Commission in partnership with 28 local workforce development boards forms Texas Workforce Solutions*  
Workforce Solutions Rural Capital Area is an Equal Opportunity Employer/Program  
Auxiliary Aids and Services are available upon request to individuals with disabilities  
Relay TX: 711 or 1-800-735-2988 (Voice) or 1-800-735-2989 (TDD)

## Rural Capital Workforce Development Area

October 2019



### WDA Labor Force Statistics

	Oct-19	Sep-19	Oct-18	Yearly Change
Civilian Labor Force	549,989	545,630	537,709	12,280
Employed	535,061	530,485	522,134	12,927
Unemployed	14,928	15,145	15,575	-647
Unemployment Rate	2.7%	2.8%	2.9%	-0.2%

### Texas Labor Force Statistics

	Oct-19	Sep-19	Oct-18	Yearly Change
Civilian Labor Force	14,189,091	14,113,138	13,901,088	288,003
Employed	13,721,100	13,641,611	13,411,884	309,216
Unemployed	467,991	471,527	489,204	-21,213
Unemployment Rate	3.3%	3.3%	3.5%	-0.2%

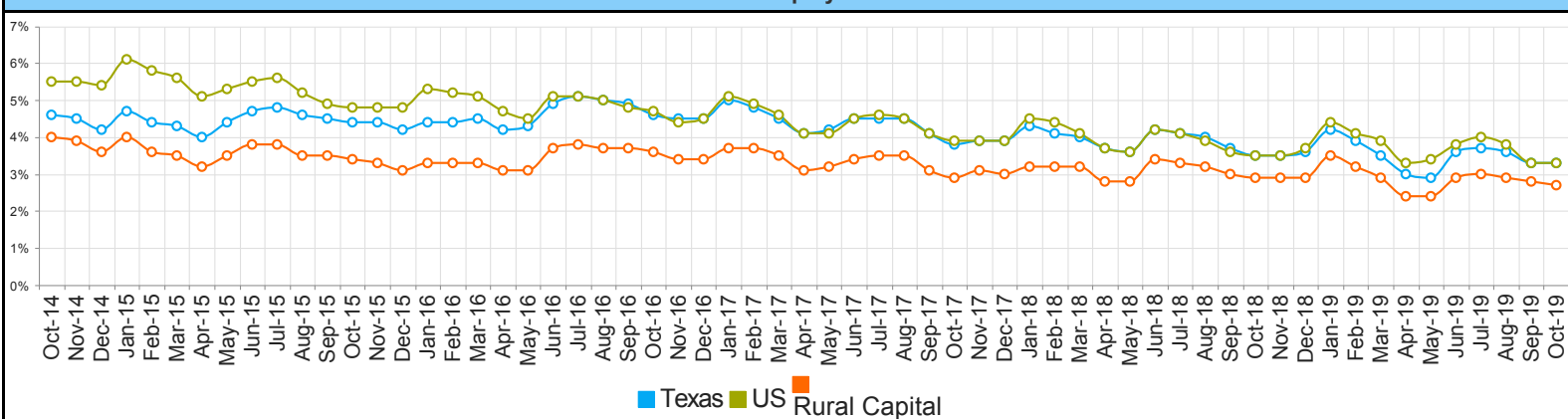
### US Labor Force Statistics

	Oct-19	Sep-19	Oct-18	Yearly Change
Civilian Labor Force	164,576,000	163,943,000	162,723,000	1,853,000
Employed	159,067,000	158,478,000	156,952,000	2,115,000
Unemployed	5,510,000	5,465,000	5,771,000	-261,000
Unemployment Rate	3.3%	3.3%	3.5%	-0.2%

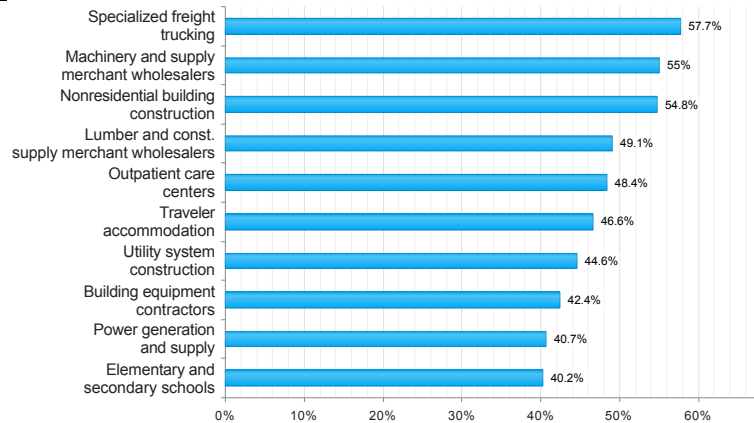
### Continued Claims for the Week of the 12th

	Oct-19	Sep-19	Oct-18	Yearly Change
WDA	N/A	2,558	2,435	N/A
Texas	N/A	89,379	80,335	N/A

## Historical Unemployment Rates



## Projected Top Ten Fastest Growing Industries in WDA (% Growth 2016-2026)



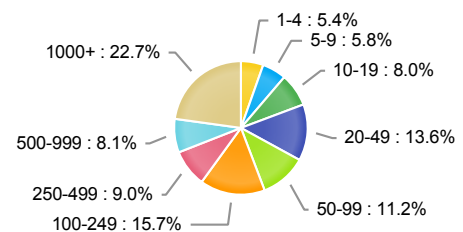
### Average Weekly Wage (2nd Quarter 2019)

	Q2 2019	Q1 2019	Q2 2018	Quarterly Change	Yearly Change
WDA	\$952	\$1,048	\$908	-\$96	\$44
Texas	\$1,102	\$1,204	\$1,062	-\$102	\$40
US	N/A	\$1,184	\$1,055	N/A	N/A

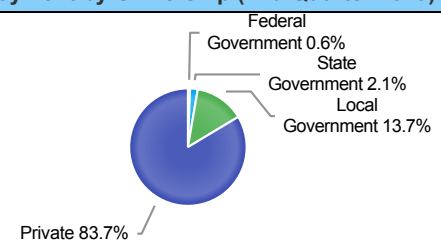
## Employment by Industry (2nd Quarter 2019, Percent Change)

Industry	Employment	% of Total	% Quarterly Change	% Yearly Change
Natural Resources and Mining	4,616	1.4%	4.5%	10.6%
Construction	28,777	8.9%	5.1%	8.0%
Manufacturing	23,664	7.3%	0.5%	6.5%
Trade, Transportation and Utilities	74,656	23.2%	-0.1%	1.5%
Information	4,305	1.3%	7.0%	15.0%
Financial Activities	14,116	4.4%	2.8%	4.3%
Professional and Business Services	31,678	9.8%	1.6%	9.6%
Education and Health Services	75,070	23.3%	0.0%	2.5%
Leisure and Hospitality	44,266	13.7%	4.7%	2.6%
Other Services	10,530	3.3%	2.2%	6.2%
Public Administration	10,691	3.3%	2.5%	3.2%

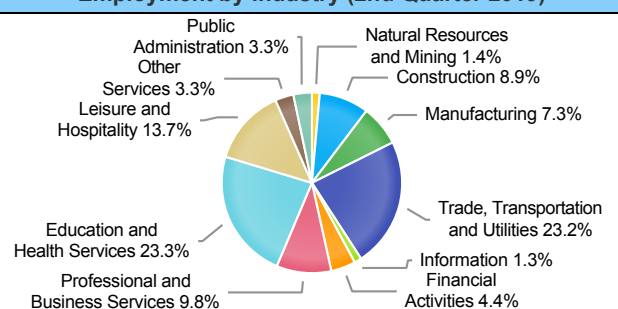
## Employment by Size Class (2nd Quarter 2019)



## Employment by Ownership (2nd Quarter 2019)



## Employment by Industry (2nd Quarter 2019)



\*The average weekly wage for U.S. for the latest quarter is not available. It will be updated shortly.

RURAL CAPITAL																									
														Change from Last Month (Oct 19 vs. Sep 19)				Change from Last Year (Oct 19 vs. Oct 18)							
October-19				September-19				October-18																	
Area	Area Type	Labor Force	Employment	Unemployment	Rate	Labor Force	Employment	Unemployment	Rate	Labor Force	Employment	Unemployment	Rate	Labor Force	Employment	Unemploymer	Rate	Labor Force	Employment	Unemployment	Rate				
Texas	State	14,189,091	13,721,100	467,991	3.3	14,113,138	13,641,611	471,527	3.3	13,901,088	13,411,884	489,204	3.5	75953	79489	-3536	0.00	288003	309216	-21213	-0.20				
Austin-Round Rock	MSA	1,230,508	1,199,124	31,384	2.6	1,220,390	1,188,458	31,932	2.6	1,203,065	1,169,689	33,376	2.8	10118	10666	-548	0.00	27443	29435	-1992	-0.20				
Rural Capital	WDA	549,989	535,061	14,928	2.7	545,630	530,485	15,145	2.8	537,709	522,134	15,575	2.9	4359	4576	-217	-0.10	12280	12927	-647	-0.20				
Bastrop	County	42,620	41,398	1,222	2.9	42,225	40,995	1,230	2.9	41,610	40,332	1,278	3.1	395	403	-8	0.00	1010	1066	-56	-0.20				
Blanco	County	6,432	6,286	146	2.3	6,388	6,239	149	2.3	6,223	6,074	149	2.4	44	47	-3	0.00	209	212	-3	-0.10				
Burnet	County	23,409	22,794	615	2.6	23,492	22,871	621	2.6	23,081	22,463	618	2.7	-83	-77	-6	0.00	328	331	-3	-0.10				
Caldwell	County	19,610	19,000	610	3.1	19,448	18,816	632	3.2	19,169	18,514	655	3.4	162	184	-22	-0.10	441	486	-45	-0.30				
Fayette	County	12,514	12,211	303	2.4	12,650	12,339	311	2.5	12,558	12,237	321	2.6	-136	-128	-8	-0.10	-44	-26	-18	-0.20				
Hays	County	117,770	114,594	3,176	2.7	116,746	113,540	3,206	2.7	114,969	111,746	3,223	2.8	1024	1054	-30	0.00	2801	2848	-47	-0.10				
Lee	County	9,863	9,605	258	2.6	9,494	9,240	254	2.7	9,412	9,153	259	2.8	369	365	4	-0.10	451	452	-1	-0.20				
Llano	County	8,487	8,220	267	3.1	8,691	8,408	283	3.3	8,520	8,226	294	3.5	-204	-188	-16	-0.20	-33	-6	-27	-0.40				
Williamson	County	309,284	300,953	8,331	2.7	306,496	298,037	8,459	2.8	302,167	293,389	8,778	2.9	2788	2916	-128	-0.10	7117	7564	-447	-0.20				
Cedar Park	City	43,008	41,846	1,162	2.7	42,588	41,445	1,143	2.7	42,003	40,798	1,205	2.9	420	401	19	0.00	1005	1048	-43	-0.20				
Georgetown	City	30,761	29,765	996	3.2	30,505	29,477	1,028	3.4	30,079	29,017	1,062	3.5	256	288	-32	-0.20	682	748	-66	-0.30				
Hutto	City	14,597	14,221	376	2.6	14,483	14,083	400	2.8	14,268	13,863	405	2.8	114	138	-24	-0.20	329	358	-29	-0.20				
Kyle	City	24,102	23,452	650	2.7	23,907	23,236	671	2.8	23,538	22,869	669	2.8	195	216	-21	-0.10	564	583	-19	-0.10				
Leander	City	26,976	26,223	753	2.8	26,756	25,970	786	2.9	26,280	25,565	715	2.7	220	253	-33	-0.10	696	658	38	0.10				
Round Rock	City	70,557	68,777	1,780	2.5	69,957	68,111	1,846	2.6	69,000	67,049	1,951	2.8	600	666	-66	-0.10	1557	1728	-171	-0.30				
San Marcos	City	34,102	33,065	1,037	3.0	33,774	32,761	1,013	3.0	33,261	32,243	1,018	3.1	328	304	24	0.00	841	822	19	-0.10				