



A proud partner of the [AmericanJobCenter](#)® network

## PRESS RELEASE

**FOR IMMEDIATE RELEASE**

**DATE:** August 16, 2019

**MEDIA CONTACT:** BRIAN HERNANDEZ

**PHONE:** 512-244-7966

### **Rural Capital Area Unemployment Inches Higher in July**

CEDAR PARK, Texas – The unemployment rate in the Rural Capital Area of Central Texas was slightly higher in July compared to the month prior. According to figures released today by the [Texas Workforce Commission](#) (TWC), the unemployment rate in July for the nine-county workforce development area was 3.0 percent\*, up from 2.9 percent in June, but below 3.3 percent in July 2018. The 3.0 percent unemployment rate represented 16,580 residents seeking employment. The region's unemployment rate remained below both the Texas (3.7 percent)\* and national (4.0 percent)\* rates, which both saw increases in July.

Within the Rural Capital Area counties, Blanco recorded the lowest unemployment rate at 2.8 percent in July, Burnet and Fayette were at 2.9 percent, Hays and Williamson counties were at 3.0 percent, Lee came in at 3.1 percent, Bastrop was at 3.5 percent, and Llano was at 3.6 percent, while Caldwell County was at 3.8 percent.

Key Points by Industry for the Rural Capital Area, according to the most recent labor market data:

- The Information Services Industry has experienced the greatest quarterly employment growth with an increase of 10.3 percent.
- Job gains were also experienced in the Professional and Business Services Industry (2.9 percent), and the Manufacturing Industry (2.5 percent).
- The Professional and Business Services Industry in the Rural Capital Area also experienced the greatest positive annual job growth with an increase of 10.8 percent.
- Significant positive annual job growth was also experienced in the Natural Resources and Mining Industry (9.5 percent), the Manufacturing Industry (8.5 percent), and the Information Services Industry (6.8 percent).

Employment estimates released by TWC are produced in cooperation with the U.S. Department of Labor's Bureau of Labor Statistics. All estimates are subject to revision. To access this and more employment data, visit [texaslmi.com](http://texaslmi.com).

####BH

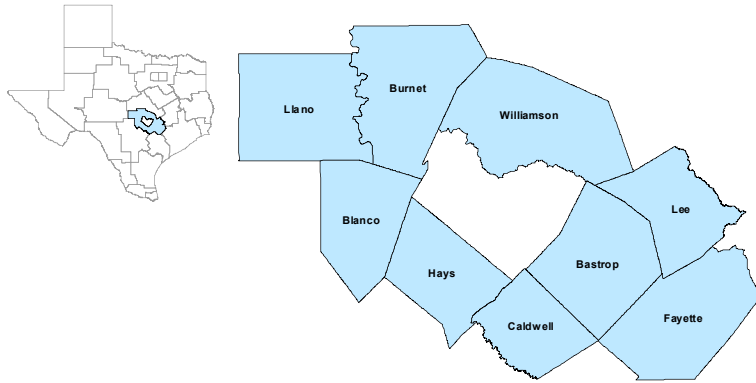
*Workforce Solutions Rural Capital Area is a nonprofit community partnership providing no cost recruitment, employment services and child care assistance, to businesses and job seekers in the Rural Capital Area of central Texas. This nine-county region includes Bastrop; Blanco; Burnet; Caldwell; Fayette; Hays; Lee; Llano; and Williamson counties. For more details on WSRCA, and the services it offers, visit [www.workforcesolutionsrca.com](http://www.workforcesolutionsrca.com).*

*\*All unemployment rates listed are not seasonally adjusted.*

*The Texas Workforce Commission in partnership with 28 local workforce development boards forms Texas Workforce Solutions*  
Workforce Solutions Rural Capital Area is an Equal Opportunity Employer/Program  
Auxiliary Aids and Services are available upon request to individuals with disabilities  
Relay TX: 711 or 1-800-735-2988 (Voice) or 1-800-735-2989 (TDD)

## Rural Capital Workforce Development Area

July 2019



### WDA Labor Force Statistics

|                      | Jul-19  | Jun-19  | Jul-18  | Yearly Change |
|----------------------|---------|---------|---------|---------------|
| Civilian Labor Force | 544,767 | 545,111 | 538,724 | 6,043         |
| Employed             | 528,187 | 529,274 | 521,034 | 7,153         |
| Unemployed           | 16,580  | 15,837  | 17,690  | -1,110        |
| Unemployment Rate    | 3.0%    | 2.9%    | 3.3%    | -0.3%         |

### Texas Labor Force Statistics

|                      | Jul-19     | Jun-19     | Jul-18     | Yearly Change |
|----------------------|------------|------------|------------|---------------|
| Civilian Labor Force | 14,066,138 | 14,041,604 | 13,887,986 | 178,152       |
| Employed             | 13,542,200 | 13,540,702 | 13,320,601 | 221,599       |
| Unemployed           | 523,938    | 500,902    | 567,385    | -43,447       |
| Unemployment Rate    | 3.7%       | 3.6%       | 4.1%       | -0.4%         |

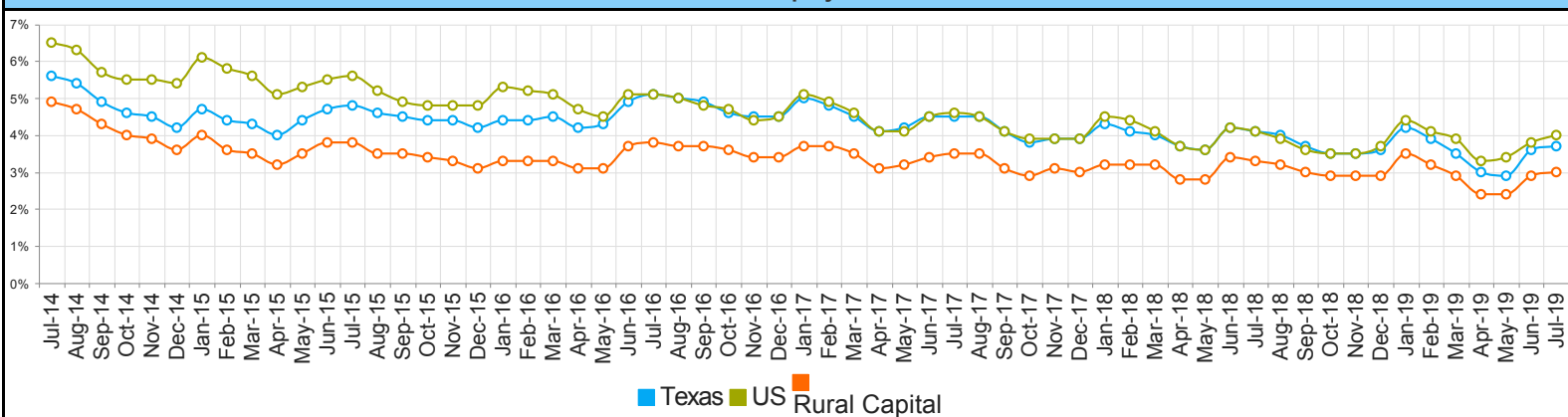
### US Labor Force Statistics

|                      | Jul-19      | Jun-19      | Jul-18      | Yearly Change |
|----------------------|-------------|-------------|-------------|---------------|
| Civilian Labor Force | 164,941,000 | 164,120,000 | 163,734,000 | 1,207,000     |
| Employed             | 158,385,000 | 157,828,000 | 157,004,000 | 1,381,000     |
| Unemployed           | 6,556,000   | 6,292,000   | 6,730,000   | -174,000      |
| Unemployment Rate    | 4.0%        | 3.8%        | 4.1%        | -0.1%         |

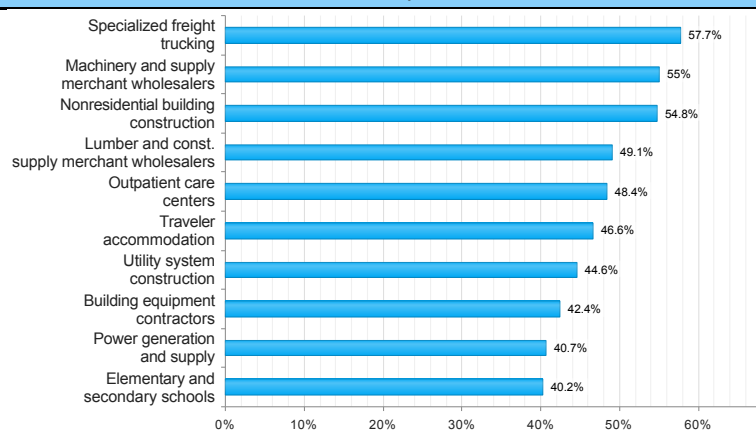
### Continued Claims for the Week of the 12th

|       | Jul-19  | Jun-19  | Jul-18  | Yearly Change |
|-------|---------|---------|---------|---------------|
| WDA   | 2,762   | 2,692   | 2,987   | -225          |
| Texas | 103,612 | 101,617 | 103,675 | -63           |

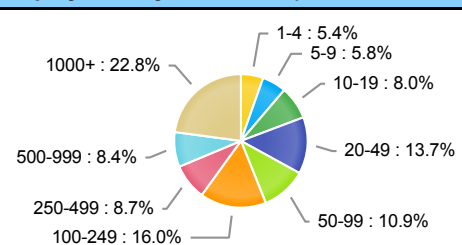
## Historical Unemployment Rates



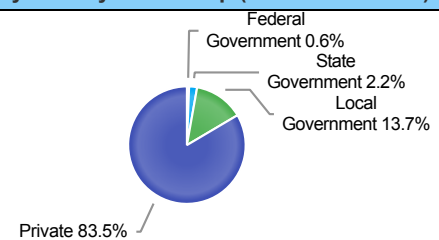
## Projected Top Ten Fastest Growing Industries in WDA (% Growth 2016-2026)



## Employment by Size Class (1st Quarter 2019)



## Employment by Ownership (1st Quarter 2019)



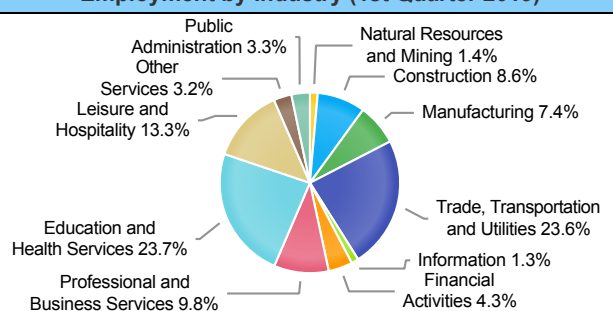
### Average Weekly Wage (1st Quarter 2019)

|       | Q1 2019 | Q4 2018 | Q1 2018 | Quarterly Change | Yearly Change |
|-------|---------|---------|---------|------------------|---------------|
| WDA   | \$1,048 | \$969   | \$994   | \$79             | \$54          |
| Texas | \$1,204 | \$1,148 | \$1,168 | \$56             | \$36          |
| US    | N/A     | \$1,144 | \$1,152 | N/A              | N/A           |

## Employment by Industry (1st Quarter 2019, Percent Change)

| Industry                            | Employment | % of Total | % Quarterly Change | % Yearly Change |
|-------------------------------------|------------|------------|--------------------|-----------------|
| Natural Resources and Mining        | 4,401      | 1.4%       | 0.6%               | 9.5%            |
| Construction                        | 27,278     | 8.6%       | 0.8%               | 5.7%            |
| Manufacturing                       | 23,499     | 7.4%       | 2.5%               | 8.5%            |
| Trade, Transportation and Utilities | 74,796     | 23.6%      | -2.0%              | 2.2%            |
| Information                         | 4,019      | 1.3%       | 10.3%              | 6.8%            |
| Financial Activities                | 13,731     | 4.3%       | -0.1%              | 3.6%            |
| Professional and Business Services  | 31,098     | 9.8%       | 2.9%               | 10.8%           |
| Education and Health Services       | 74,880     | 23.7%      | -0.1%              | 2.2%            |
| Leisure and Hospitality             | 42,170     | 13.3%      | -0.6%              | 3.9%            |
| Other Services                      | 10,256     | 3.2%       | 2.8%               | 6.6%            |
| Public Administration               | 10,433     | 3.3%       | 0.7%               | 2.7%            |

## Employment by Industry (1st Quarter 2019)



\*The average weekly wage for U.S. for the latest quarter is not available. It will be updated shortly.