



A proud partner of the [AmericanJobCenter](#)® network

PRESS RELEASE

FOR IMMEDIATE RELEASE

DATE: MARCH 13, 2020

MEDIA CONTACT: BRIAN HERNANDEZ

PHONE: 512-244-7966 EXT. 5020

Rural Capital Area Unemployment Rate Ticks Up in January; Region Sees 3.13% Annual Job Growth Rate

CEDAR PARK, Texas – The unadjusted unemployment rate in the [Workforce Solutions Rural Capital Area](#) (WSRCA) ticked up slightly in January 2020, compared to the month prior, though there was still a favorable drop compared to the rate last year. According to figures released today by the [Texas Workforce Commission](#) (TWC), the unemployment rate for the nine-county workforce development area was 2.9 percent*, up from 2.5 percent in December 2019, but below the 3.4 percent recorded in January 2019. The 2.9 percent unemployment rate represented 16,356 residents seeking employment. The region's unemployment rate remained below both the Texas (3.8 percent)* and national (4.0 percent)* rates, which both saw increases in January.

The Rural Capital Area's 3.13 percent annual growth rate represents the addition of 16,601 jobs since January 2019.

Within the WSRCA counties, Blanco recorded the lowest unemployment rate at 2.5 percent in January. Burnet, Fayette and Lee counties were at 2.8 percent. Hays and Williamson counties were at 2.9 percent. Bastrop County was at 3.1 percent, while Caldwell County was at 3.4 percent, and Llano County was at 3.6 percent.

Key Points by Industry for the Rural Capital Area, according to the most recent labor market data:

- The Public Administration Services Industry has experienced the greatest quarterly employment growth with an increase of 2.3 percent.
- Job gains were also experienced in the Professional and Business Services Industry (2.2 percent), as well as the Financial Activities Industry (2.1 percent).
- The Information Services Industry in the Rural Capital Area also experienced the greatest positive annual job growth with an increase of 13.7 percent.
- Significant positive annual job growth was also experienced in the Professional and Business Services Industry (11.2 percent), and the Construction Industry (8.1 percent).

Employment estimates released by TWC are produced in cooperation with the U.S. Department of Labor's Bureau of Labor Statistics. All estimates are subject to revision. To access this and more employment data, visit [texaslmi.com](https://www.texaslmi.com).

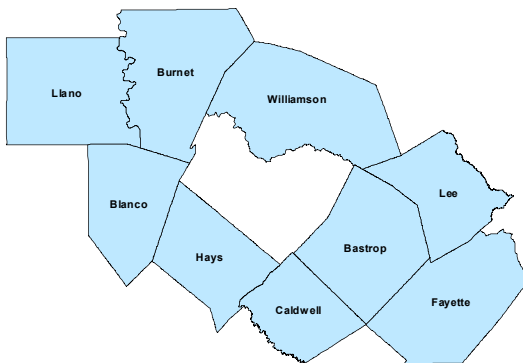
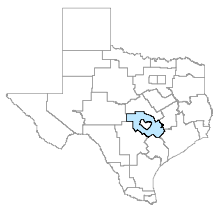
Workforce Solutions Rural Capital Area is a nonprofit community partnership providing no cost recruitment, employment services and childcare assistance, to businesses, employers and job seekers in the Rural Capital Area of central Texas. This nine-county region includes Bastrop; Blanco; Burnet; Caldwell; Fayette; Hays; Lee; Llano; and Williamson counties. For more details on WSRCA, and the services it offers, visit www.workforcesolutionsrca.com.

**All unemployment rates listed are not seasonally adjusted.*

The Texas Workforce Commission in partnership with 28 local workforce development boards forms Texas Workforce Solutions
Workforce Solutions Rural Capital Area is an Equal Opportunity Employer/Program
Auxiliary Aids and Services are available upon request to individuals with
disabilities Relay TX: 711 or 1-800-735-2988 (Voice) or 1-800-735-2989 (TDD)

Rural Capital Workforce Development Area

January 2020



WDA Labor Force Statistics

| | Jan-20 | Dec-19 | Jan-19 | Yearly Change |
|----------------------|---------|---------|---------|---------------|
| Civilian Labor Force | 564,184 | 564,173 | 549,668 | 14,516 |
| Employed | 547,828 | 549,805 | 531,227 | 16,601 |
| Unemployed | 16,356 | 14,368 | 18,441 | -2,085 |
| Unemployment Rate | 2.9% | 2.5% | 3.4% | -0.5% |

Texas Labor Force Statistics

| | Jan-20 | Dec-19 | Jan-19 | Yearly Change |
|----------------------|------------|------------|------------|---------------|
| Civilian Labor Force | 14,187,439 | 14,192,255 | 13,938,076 | 249,363 |
| Employed | 13,654,962 | 13,722,119 | 13,365,741 | 289,221 |
| Unemployed | 532,477 | 470,136 | 572,335 | -39,858 |
| Unemployment Rate | 3.8% | 3.3% | 4.1% | -0.3% |

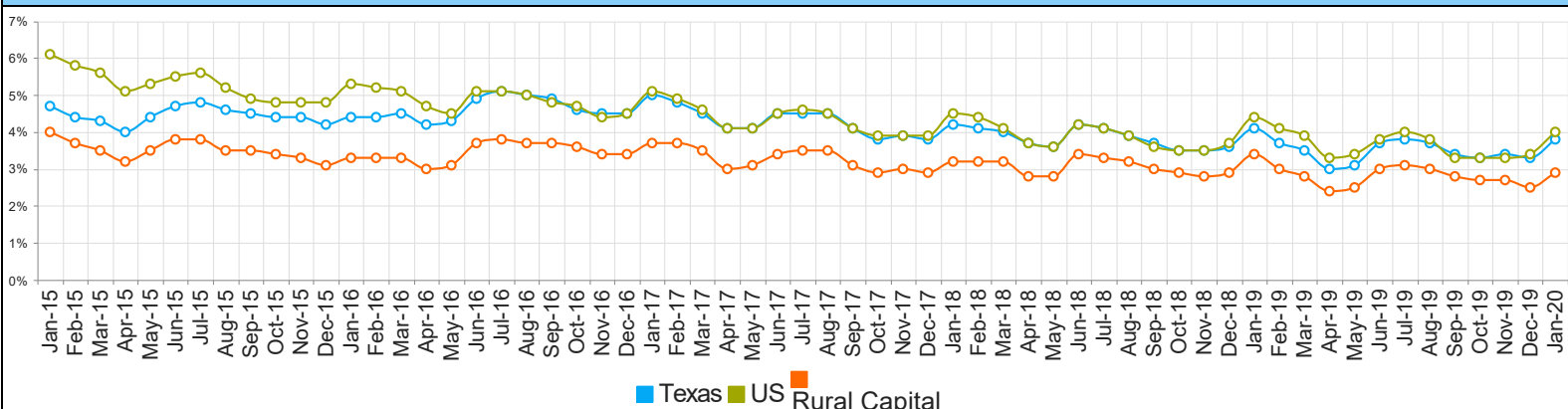
US Labor Force Statistics

| | Jan-20 | Dec-19 | Jan-19 | Yearly Change |
|----------------------|-------------|-------------|-------------|---------------|
| Civilian Labor Force | 163,497,000 | 164,007,000 | 162,104,000 | 1,393,000 |
| Employed | 156,994,000 | 158,504,000 | 154,964,000 | 2,030,000 |
| Unemployed | 6,504,000 | 5,503,000 | 7,140,000 | -636,000 |
| Unemployment Rate | 4.0% | 3.4% | 4.4% | -0.4% |

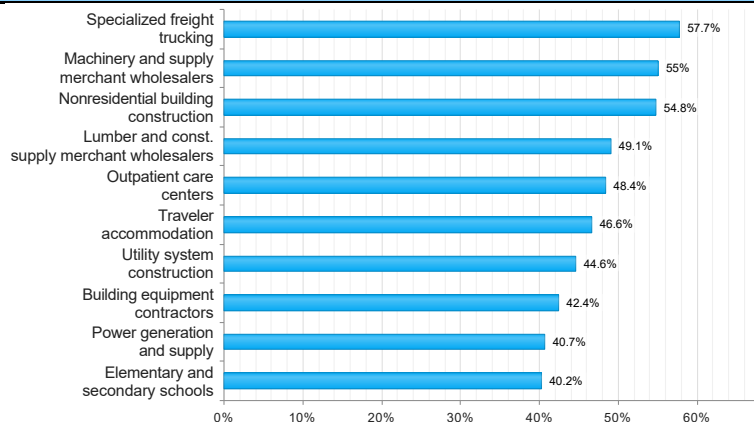
Continued Claims for the Week of the 12th

| | Jan-20 | Dec-19 | Jan-19 | Yearly Change |
|-------|---------|---------|--------|---------------|
| WDA | 2,611 | 2,514 | 2,526 | 85 |
| Texas | 109,138 | 102,136 | 99,498 | 9,640 |

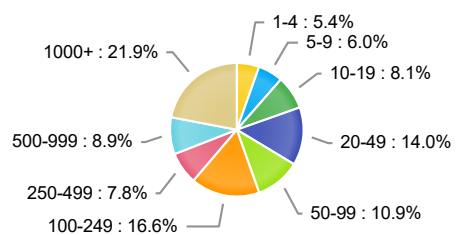
Historical Unemployment Rates



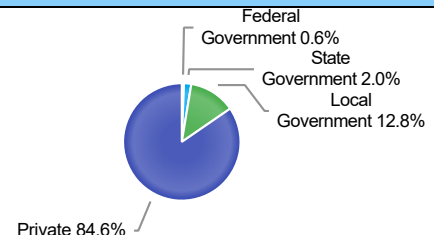
Projected Top Ten Fastest Growing Industries in WDA (% Growth 2016-2026)



Employment by Size Class (3rd Quarter 2019)



Employment by Ownership (3rd Quarter 2019)



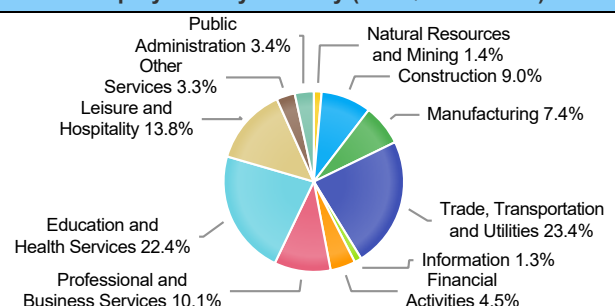
Average Weekly Wage (3rd Quarter 2019)

| | Q3 2019 | Q2 2019 | Q3 2018 | Quarterly Change | Yearly Change |
|-------|---------|---------|---------|------------------|---------------|
| WDA | \$1,003 | \$952 | \$916 | \$51 | \$87 |
| Texas | \$1,109 | \$1,101 | \$1,065 | \$8 | \$44 |
| US | \$1,093 | \$1,095 | \$1,055 | \$-2 | \$38 |

Employment by Industry (3rd Quarter 2019, Percent Change)

| Industry | Employment | % of Total | % Quarterly Change | % Yearly Change |
|-------------------------------------|------------|------------|--------------------|-----------------|
| Natural Resources and Mining | 4,453 | 1.4% | -3.2% | 3.6% |
| Construction | 29,142 | 9.0% | 1.1% | 8.1% |
| Manufacturing | 23,839 | 7.4% | 0.8% | 4.7% |
| Trade, Transportation and Utilities | 75,460 | 23.4% | 0.9% | 2.0% |
| Information | 4,208 | 1.3% | -2.9% | 13.7% |
| Financial Activities | 14,410 | 4.5% | 2.1% | 5.0% |
| Professional and Business Services | 32,404 | 10.1% | 2.2% | 11.2% |
| Education and Health Services | 72,162 | 22.4% | -3.9% | 3.4% |
| Leisure and Hospitality | 44,516 | 13.8% | 0.3% | 3.5% |
| Other Services | 10,756 | 3.3% | 2.0% | 6.7% |
| Public Administration | 10,948 | 3.4% | 2.3% | 4.4% |

Employment by Industry (3rd Quarter 2019)



| RURAL CAPITAL AREA | | | | | | | | | | | | | | | | | | | | | |
|--------------------|-----------|-------------|------------|--------------|------|-------------|------------|--------------|------|-------------|------------|--------------|------|---|------------|--------------|------|---|------------|--------------|------|
| January-20 | | | | | | December-19 | | | | January-19 | | | | Change from Last Month (January-20 vs. December-19) | | | | Change from Last Year (January-20 vs. January-19) | | | |
| Area | Area Type | Labor Force | Employment | Unemployment | Rate | Labor Force | Employment | Unemployment | Rate | Labor Force | Employment | Unemployment | Rate | Labor Force | Employment | Unemployment | Rate | Labor Force | Employment | Unemployment | Rate |
| Texas | State | 14,187,439 | 13,654,962 | 532,477 | 3.8 | 14,192,255 | 13,722,119 | 470,136 | 3.3 | 13,938,076 | 13,365,741 | 572,335 | 4.1 | -4816 | -67157 | 62341 | 0.50 | 249363 | 289221 | -39858 | 0.30 |
| Austin-Round Rock | MSA | 1,254,494 | 1,220,005 | 34,489 | 2.7 | 1,255,200 | 1,224,993 | 30,207 | 2.4 | 1,221,167 | 1,181,941 | 39,226 | 3.2 | -706 | -4988 | 4282 | 0.30 | 33327 | 38064 | -4737 | 0.50 |
| Rural Capital | WDA | 564,184 | 547,828 | 16,356 | 2.9 | 564,173 | 549,805 | 14,368 | 2.5 | 549,668 | 531,227 | 18,441 | 3.4 | 11 | -1977 | 1988 | 0.40 | 14516 | 16601 | -2085 | 0.50 |
| Bastrop | County | 43,447 | 42,107 | 1,340 | 3.1 | 43,487 | 42,291 | 1,196 | 2.8 | 42,322 | 40,753 | 1,569 | 3.7 | -40 | -184 | 144 | 0.30 | 1125 | 1354 | -229 | 0.60 |
| Blanco | County | 6,594 | 6,432 | 162 | 2.5 | 6,515 | 6,376 | 139 | 2.1 | 6,383 | 6,200 | 183 | 2.9 | 79 | 56 | 23 | 0.40 | 211 | 232 | -21 | 0.40 |
| Burnet | County | 23,627 | 22,960 | 667 | 2.8 | 23,540 | 22,958 | 582 | 2.5 | 23,279 | 22,556 | 723 | 3.1 | 87 | 2 | 85 | 0.30 | 348 | 404 | -56 | 0.30 |
| Caldwell | County | 19,909 | 19,242 | 667 | 3.4 | 19,898 | 19,326 | 572 | 2.9 | 19,416 | 18,626 | 790 | 4.1 | 11 | -84 | 95 | 0.50 | 493 | 616 | -123 | 0.70 |
| Fayette | County | 12,088 | 11,752 | 336 | 2.8 | 12,026 | 11,740 | 286 | 2.4 | 12,477 | 12,117 | 360 | 2.9 | 62 | 12 | 50 | 0.40 | -389 | -365 | -24 | 0.10 |
| Hays | County | 121,554 | 118,075 | 3,479 | 2.9 | 121,589 | 118,563 | 3,026 | 2.5 | 118,372 | 114,345 | 4,027 | 3.4 | -35 | -488 | 453 | 0.40 | 3182 | 3730 | -548 | 0.50 |
| Lee | County | 10,008 | 9,726 | 282 | 2.8 | 10,003 | 9,749 | 254 | 2.5 | 9,723 | 9,409 | 314 | 3.2 | 5 | -23 | 28 | 0.30 | 285 | 317 | -32 | 0.40 |
| Llano | County | 8,689 | 8,379 | 310 | 3.6 | 8,678 | 8,399 | 279 | 3.2 | 8,426 | 8,075 | 351 | 4.2 | 11 | -20 | 31 | 0.40 | 263 | 304 | -41 | 0.60 |
| Williamson | County | 318,268 | 309,155 | 9,113 | 2.9 | 318,437 | 310,403 | 8,034 | 2.5 | 309,270 | 299,146 | 10,124 | 3.3 | -169 | -1248 | 1079 | 0.40 | 8998 | 10009 | -1011 | 0.40 |
| Cedar Park | City | 43,452 | 42,258 | 1,194 | 2.7 | 43,542 | 42,428 | 1,114 | 2.6 | 42,259 | 40,896 | 1,363 | 3.2 | -90 | -170 | 80 | 0.10 | 1193 | 1362 | -169 | 0.50 |
| Georgetown | City | 32,122 | 31,003 | 1,119 | 3.5 | 32,082 | 31,128 | 954 | 3.0 | 31,192 | 30,000 | 1,192 | 3.8 | 40 | -125 | 165 | 0.50 | 930 | 1003 | -73 | 0.30 |
| Hutto | City | 15,141 | 14,707 | 434 | 2.9 | 15,138 | 14,767 | 371 | 2.5 | 14,695 | 14,231 | 464 | 3.2 | 3 | -60 | 63 | 0.40 | 446 | 476 | -30 | 0.30 |
| Kyle | City | 25,804 | 25,097 | 707 | 2.7 | 25,885 | 25,201 | 684 | 2.6 | 25,223 | 24,304 | 919 | 3.6 | -81 | -104 | 23 | 0.10 | 581 | 793 | -212 | 0.90 |
| Leander | City | 30,534 | 29,671 | 863 | 2.8 | 30,567 | 29,791 | 776 | 2.5 | 29,657 | 28,712 | 945 | 3.2 | -33 | -120 | 87 | 0.30 | 877 | 959 | -82 | 0.40 |
| Round Rock | City | 73,030 | 71,056 | 1,974 | 2.7 | 73,038 | 71,343 | 1,695 | 2.3 | 70,933 | 68,757 | 2,176 | 3.1 | -8 | -287 | 279 | 0.40 | 2097 | 2299 | -202 | 0.40 |
| San Marcos | City | 34,173 | 33,051 | 1,122 | 3.3 | 34,104 | 33,188 | 916 | 2.7 | 33,196 | 32,007 | 1,189 | 3.6 | 69 | -137 | 206 | 0.60 | 977 | 1044 | -67 | 0.30 |